



ERIC NEGRETTÉ

DESIGNER 2026

**COMMERCIAL | RESIDENTIAL | HEALTHCARE
HOSPITALITY | SENIOR LIVING | MULTI-FAMILY**





Eric Negrete | EL JEFE

Phone : 816 569 0034

Email : eric@ericnegrete.com

website : www.ericnegrete.com

INDEX

“I would be remiss if I did not comment on Eric’s personal character. Throughout my association with Eric, he has been highly professional and accommodating. He is one of the most resolute, passionate, hardworking, and innovative people I have ever had the pleasure of working with in any capacity. He is compassionate, kind, and never misses an opportunity to help out. His enthusiasm and cheerful outlook are contagious and his love for his work foremost.

Angela Hunt, MS, RPT
Chief Innovation Officer
The Cedars
Portland, Maine

ABOUT

PAGES 9 – 10

PHILOSOPHY

PAGES 11 – 12

MATERIALS

PAGES 13 – 14

COLLABORATION

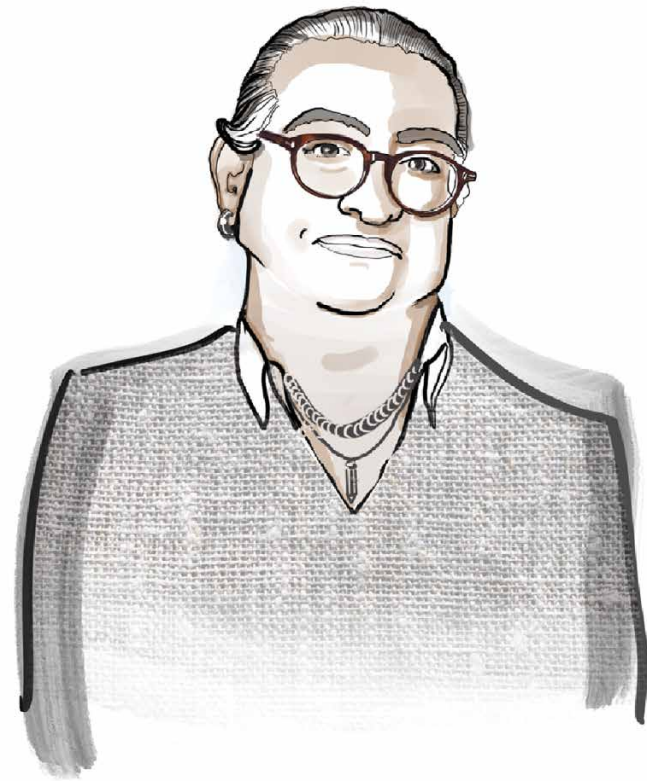
PAGES 15 – 16

PORTFOLIO

PAGES 17 – 28

CONTACT

PAGES 29 – 30



ERIC NEGRETE

With over 39 years of experience developing sophisticated and distinctive designs for corporations, investment groups, developers, and private clients, Eric has had the privilege of receiving national recognition for a wide range of outstanding projects, primarily in the senior and multi-generational living and healthcare spaces.

As an American of Mexican, European, and Indigenous descent, Eric was raised in a vibrant home that instilled in the younger generations the importance of celebrating every family's cultural and historical lineage. This has framed Eric's empathetic sensibility and allows him to readily inhabit the diversity of others' cultures and histories different from his own.

Eric's passion for traveling domestically and abroad guided him to Houston and Los Angeles. It was in L.A. where he connected and worked with some of the country's most recognized and talented designers. While in California, Eric had the privilege of being mentored and working with designers that not only challenged him to recognize his talents but also guided him how to develop and hone his innate design sensibilities and artform. Eric eventually returned to his Midwest roots where Kansas City, MO is home and continues to mentor and share the knowledge and insight that was shared with him. Life in "Paris of the Plains" has gifted Eric the pleasure of reconnecting with the community, establishing a strong brand for dEN, and sharing and influencing a more diverse design approach for the future.

PHILOSOPHY

“Design is coming to grips with one’s real lifestyle; one’s real place in the world. Rooms should not be put together for show but to nourish one’s well-being

– Albert Hadley

Eric discovers inspiration everywhere he finds himself. His respect and appreciation for conveying ideas through the unique vocabulary of an artist continually challenges him to hone his own creativity and craft. Whether drawing from Historic Classicism, French Moderne, Art Deco, or Contemporary, he believes great design is timeless. Among his influences, the mountains and deserts of the American Southwest breathe magic into Eric’s soul. For over a quarter of a century, his passionate dedication for supporting and spotlighting the Indigenous and First Peoples’ conditions and human rights has inspired Eric to connect with many pueblos and villages of North America.

IMAGES RIGHT (TOP DOWN)

Brion Sanctuary by Carlo Scarpa,
Joan Miró at work,
and the Capuchin Convent Chapel
by Luis Barragán



MATERIALS



MATERIAL PROVENANCE

Materials tell a story and no two stories are the same. Each project requires materials that help elevate its environment and explain the essence of the particular space. Material selection is as important as space planning. Materials help define the user's experience – from mood, emotion, or visual impact and beauty.

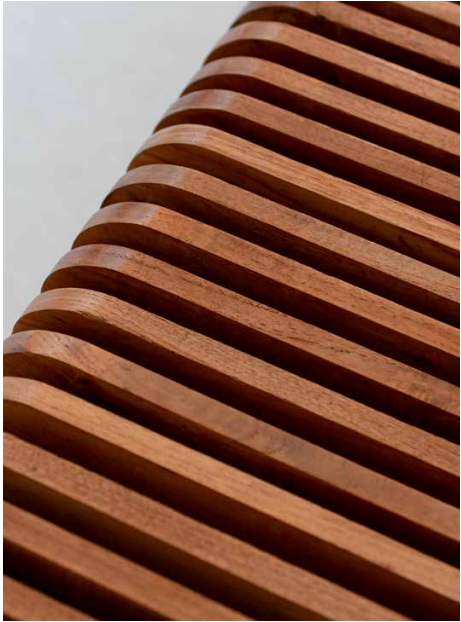


IMAGE LEFT

Photo by Karolina Grabow

IMAGES RIGHT (TOP DOWN)

Photos By Camilo Fontecilla,
Callum Shaw & Engine Akyurt

COLLABORATION

“Innovation is often the ability to reach into the past and bring back what is good, what is beautiful, what is useful, what is lasting.

– Sister Parish



Eric enjoys working with local artisans and creatives that are dedicated to their refined craft, ensuring each space has a unique story, artistry, and longevity.

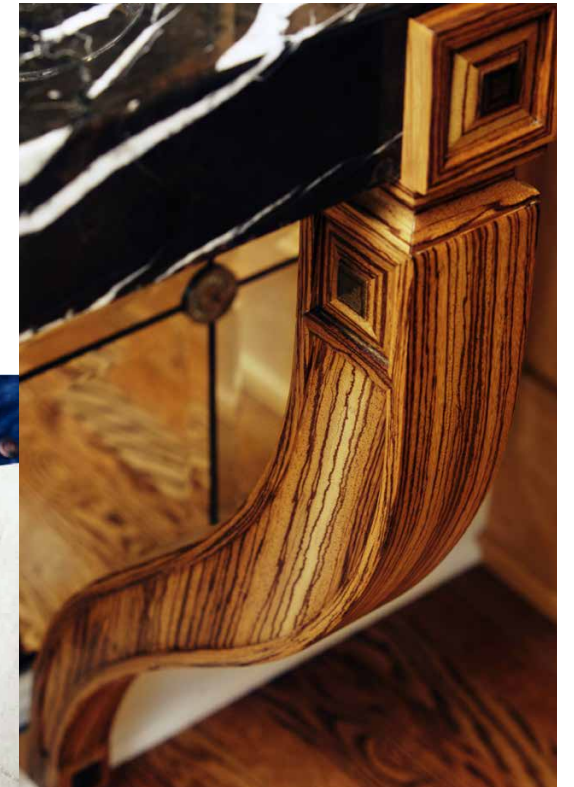


IMAGE LEFT

Photo by Felipe Ditadi

IMAGES RIGHT (TOP DOWN)

Photos By Jill DiMartino
& Giulia Squillace

Kansas City

Historic Renovation of Hotel Philips
Additional project: Private Dining Room

433 Ward Parkway Condominiums

The Sulgrave/Regency Condominiums

Hallbrook Country Club (Leawood, KS)

Crown Center Cinema

Helix/Architecture + Design offices

Nicholson Group

Mainmark Building

Red Bridge Medical Building

Michael Smith Restaurant

People to People Int’L Headquarters

Hispanic Chamber of Commerce Greater Kansas City
Historic Firestone Building | Selected Private Residences

Infinite Energy Construction Corporate Office

Lidia’s Italy Restaurants
(Kansas City & Pittsburgh locations)

The Roasterie
Bean Hangar Event Space & Café

Chicago

Northwind Resources, LLC Offices
Chicago Board of Trade Building, Chicago, IL

New York

Gardner Group, Zurich, Switzerland – NY Offices



40 Sardines, Overland Park, KS
James Beard Award Nominee: Best Restaurant Design – 2003

Extra Virgin, Kansas City, MO
KC Home Design Magazine – Silver Award
Best Use of Art for Interiors – 2007

Cellar Rat Wine Merchants, Kansas City, MO
MOKC Business Journals
Capstone Award: Best Retail Design – 2007

Indigo Wild Headquarters, Kansas City, MO
KC Magazine Commercial Journal
Design Excellence Award Best Office Space (Silver Award) – 2010



Senior Living & Healthcare

Norterre Senior Living, Liberty, MO
66 million construction budget | \$1,325,000.00 FF&E budget

Fair Haven Senior Living, Birmingham, AL
42 million construction budget

Mesa View Senior Living, Canadian, TX
13.8 million construction budget | \$936,000.00 FF&E budget

The Cedars Senior Living, Portland, ME
16 million construction budget | \$1,475,000.00 FF&E budget



Many healthcare administrators and CEOs don't understand the value of intentional design in healthcare environments. There was a time when I didn't either. Eric has the ability to demonstrate its importance. He has the heart of a teacher. The ease and naturalness with which he interacts with others has a way of opening people's minds to change and experimentation.

Matt Younger

Chief Executive Officer
Northwest Health



PROJECT OVERVIEW

The art of interior design speaks to each of us differently. Designing a space allows one a private and personal experience with endless possibilities which can be achieved by focusing on beauty, inspiration, and well-being.



BOLD

WARM

CLASSIC

CAPTIVATING

TIMELESS



A COZY EMBRACE

This library space embodies a cozy, personal space that invites relaxation. Hidden behind ebonized ash French doors, an intimate and elegant space is discovered. The Parisian tub chairs embrace visitors as they peruse a book or reflect upon their day with a glass of fine wine, surrounded by shelves filled with captivating novels and memoirs.

This feeling of coziness can also be infused into spaces intended to be experienced by a gathering of guests. Even in larger spaces, it is possible to create a warm, welcoming feeling of comfort through materials, handcrafted furniture, and well-appointed touches.

At dEN, we believe that successful interior design effortlessly blends a timeless appearance with thoughtfully curated details that surprise and delight.



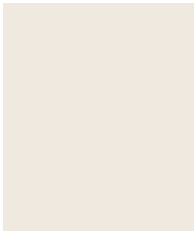


GROUND & MODERN

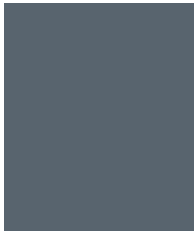
Developing a modern sense of belonging, comfort, and warmth may be achieved by layering rich wood tones, a sophisticated color palette, and luxuriously textured fabrics and appointments. Through careful selection and intent, the level of execution appears effortless yet elevated and artisanal.



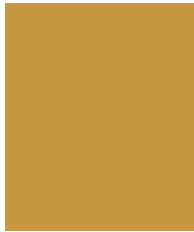
PANTONE®
19-0315 TCX
Black Forest



PANTONE®
11-0604 TCX
Gardenia



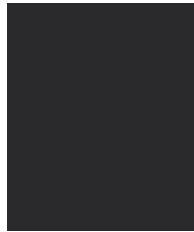
PANTONE®
18-4214 TCX
Stormy Weather



PANTONE®
15-0948 TCX
Golden Spice



PANTONE®
17-1452 TCX
Koi



PANTONE®
19-4006 TCX
Caviar

EVOKING FEELING

Creating a personal space with simplicity and restraint allows one’s unique personality to radiate with meaningful and appropriate details. Through design elements such as lighting, color palette, well-crafted furniture, and fine art, a unique language is created and translated by emotion, intrigue, and energy.



RICH TEXTURES



ENERGETIC ART



CLASSIC ELEMENTS



CRAFTED FURNITURE



CONTACT



Eric Negrete | EL JEFE

Phone : 816 569 0034

Email : eric@ericnegrete.com

website : www.ericnegrete.com



ERIC NEGRETTE

